

CALUMET-SAG CHANNEL
and
CALUMET WATER RECLAMATION PLANT
SUSTAINABILITY SUMMIT

Ford Calumet Environmental Center

October 21, 2022

Dick Lanyon

www.dicklanyon.com

dicklanyon@sbcglobal.net

312-307-8855

CALUMET

First and Forever

Draining the South Area of Chicago and Territorial Expansion

Richard Lanyon

428 Pages
26 Figures
89/566 Photos

Published September 2020

Lakeclaremontpress.com

dicklanyon@sbcglobal.net

312-307-8855

CHICAGO POLLUTING LAKE MICHIGAN

- Eliminated Chicago River pollution by reversing river flow in 1900
- Eliminated sewers discharging to Lake Michigan by 1907
- Calumet River remained a growing threat in 1911
- Indiana wasn't cooperative
- Federal government opposed reversing Calumet River flow

CHICAGO SEWERS 1908

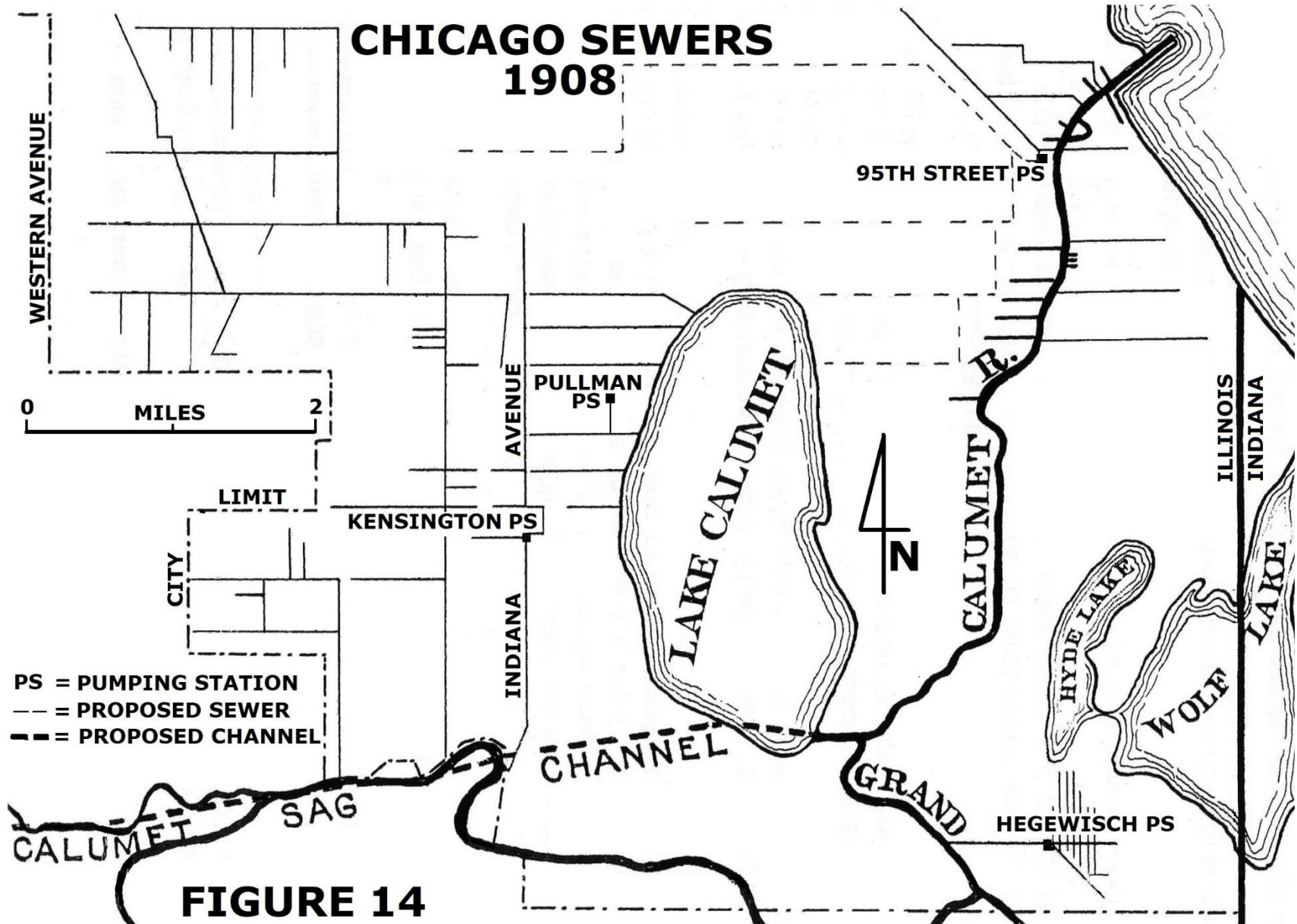
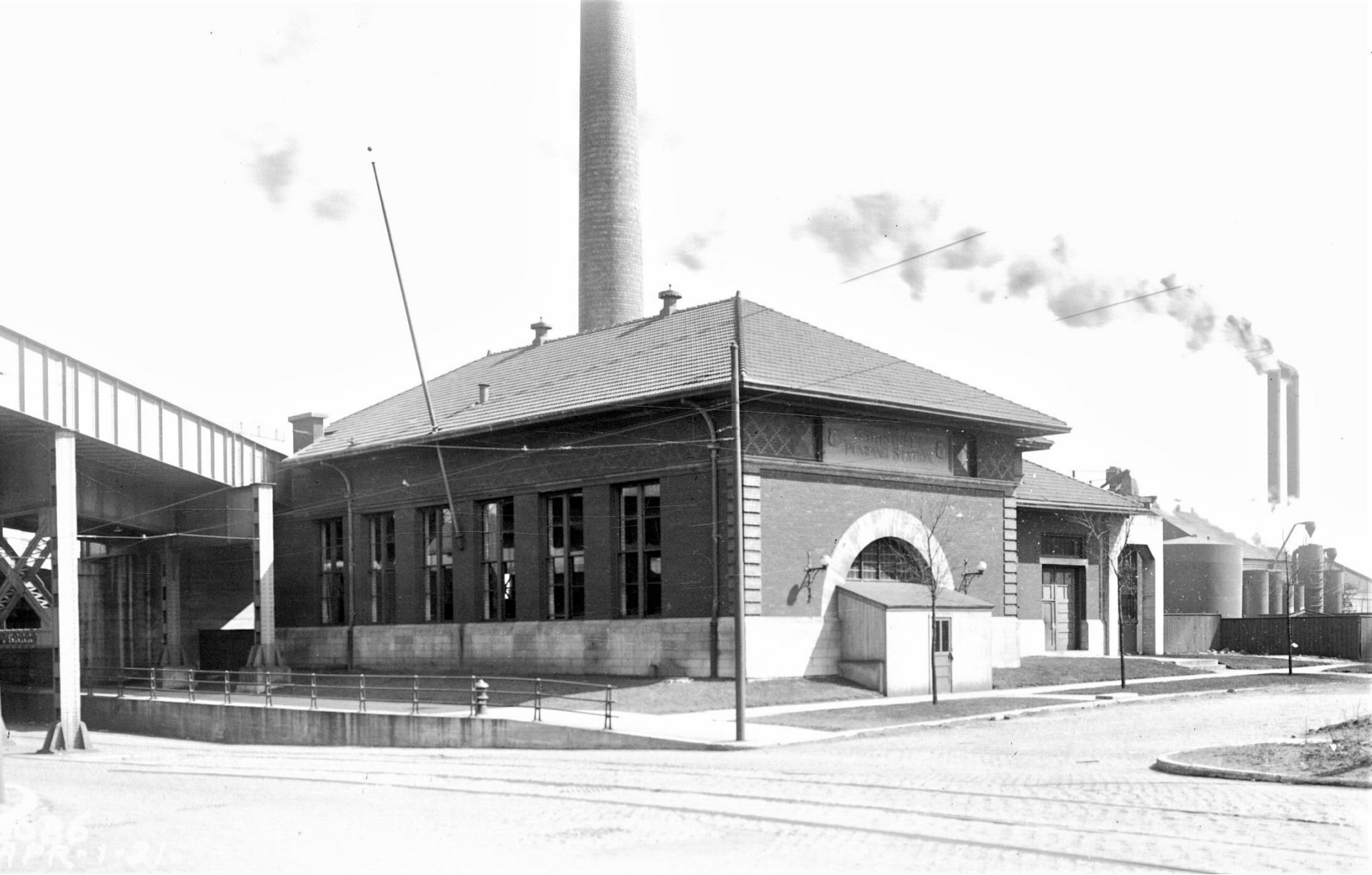


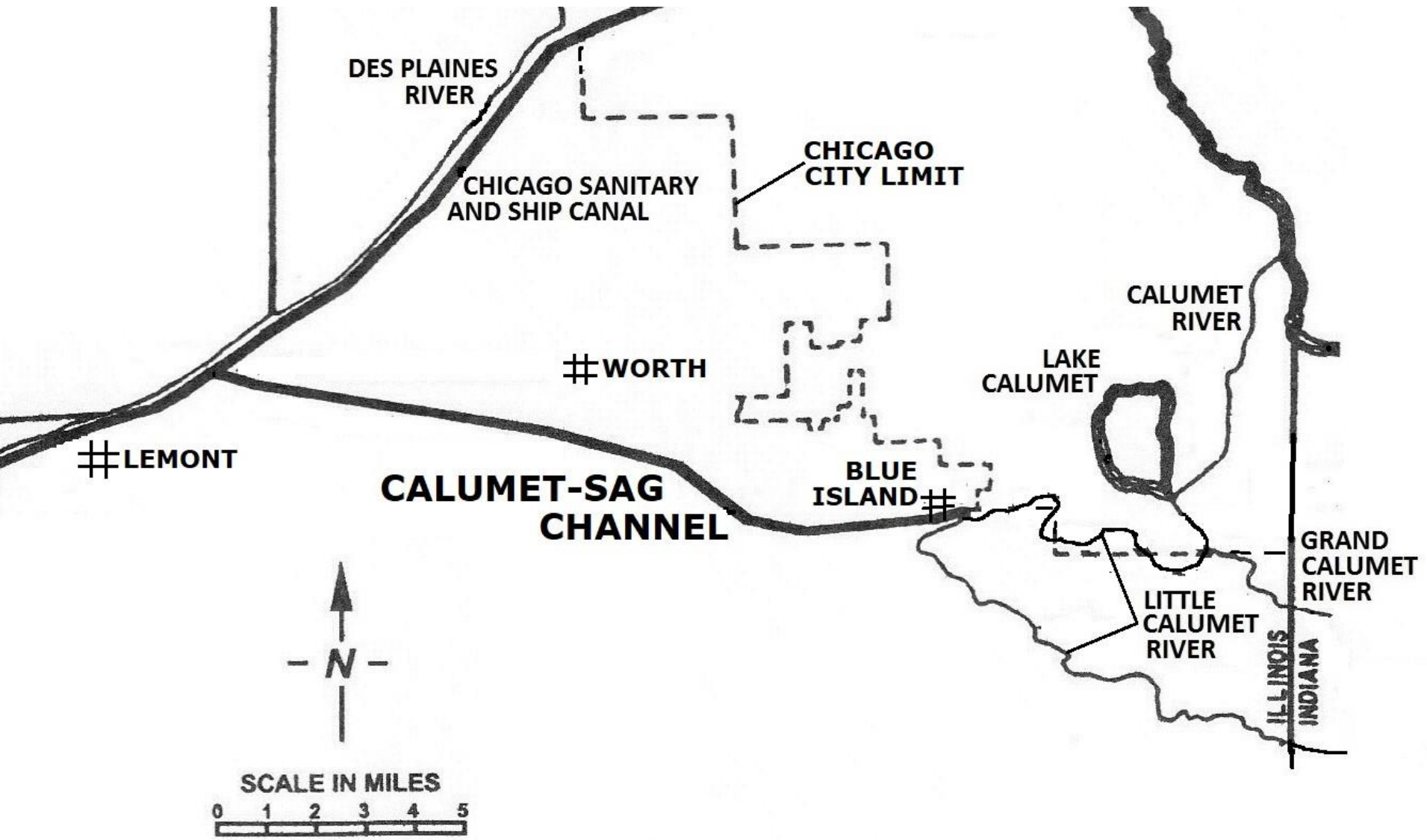
FIGURE 14



Ninety-Fifth Street Pumping Station at Baltimore Avenue
1907 - 1925

THE CALUMET PLAN

- By 1911 it was known that dilution was not the solution to pollution
- Build intercepting sewers to stop discharging sewage to the river
- Build pumping stations to move sewage away from the lake and river
- Build a plant to treat sewage
- Build a canal to convey treated sewage effluent away from the lake to the Sanitary & Ship Canal





4898-1-3-1914

Rock excavation near the west end of the
Calumet-Sag Channel, January 1914

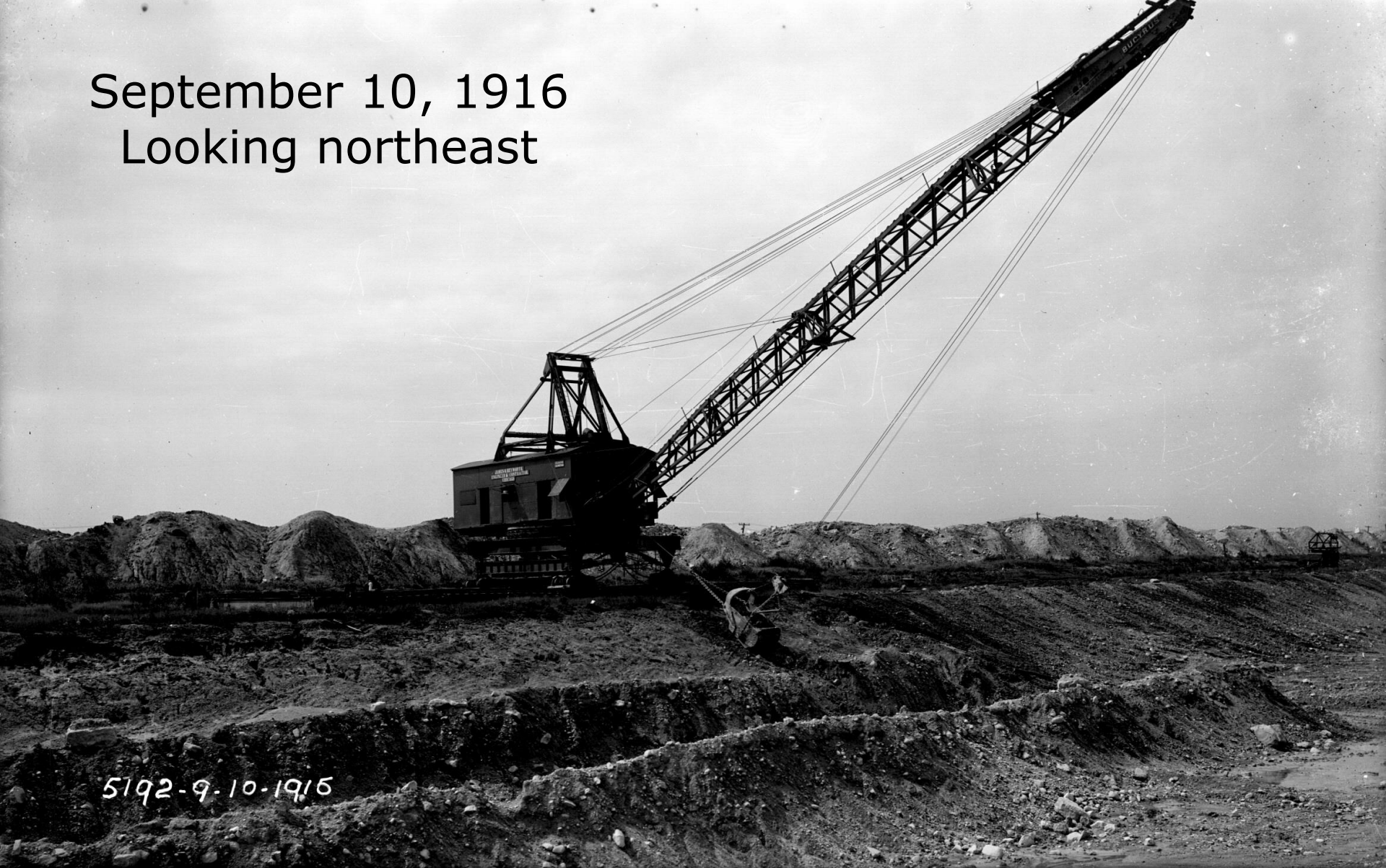


Confluence of the Calumet-Sag Channel and the
Sanitary & Ship Canal, May 1919



Looking east from the Wabash Railroad after hydraulic dredges removed marsh, July 1916

September 10, 1916
Looking northeast



5192-9-10-1915

James O. Heyworth Co. near Pulaski Road,
electrically powered dragline excavator



9253
Hand placing rock riprap after side slope failure, looking southwest near Pulaski Road, July 1922

Concrete wall construction through Blue Island, September 1920





5181-9-8-1915

Looking northwest at the completed Wabash Railroad Bridge before channel excavation, September 1915



Looking north at Western Avenue temporary and permanent bridge construction, March 1917



Looking north across Piper Road (Ridgeland Avenue) bridge, February 1922

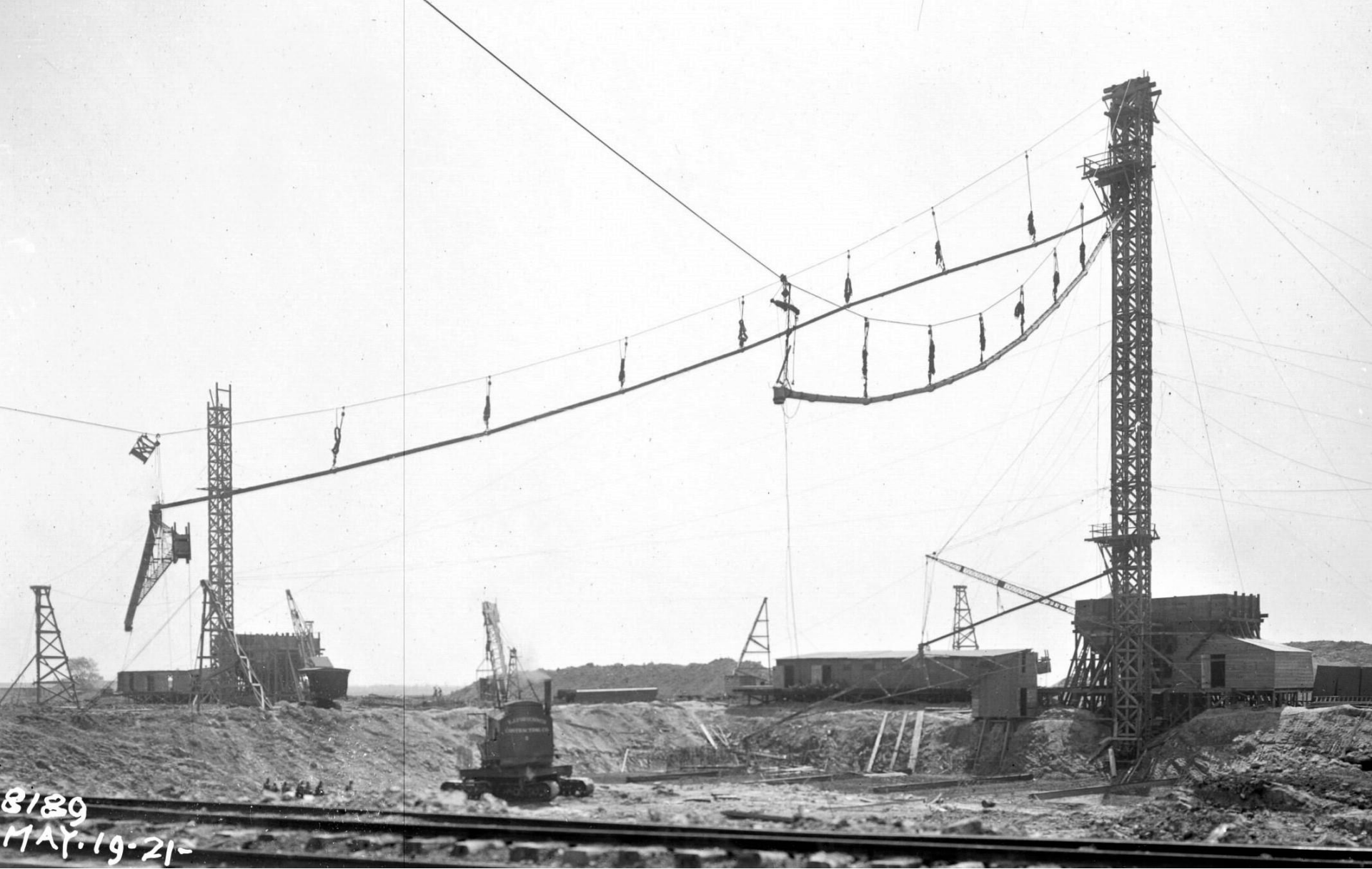
Looking west widening the Calumet-Sag Channel,
Southwest Highway and Wabash Railroad, 1961





Sluice gates

Thomas J. O'Brien Lock and Dam
on the Calumet River, 1965



Calumet Plant, towers for construction of tankage,
May 1921



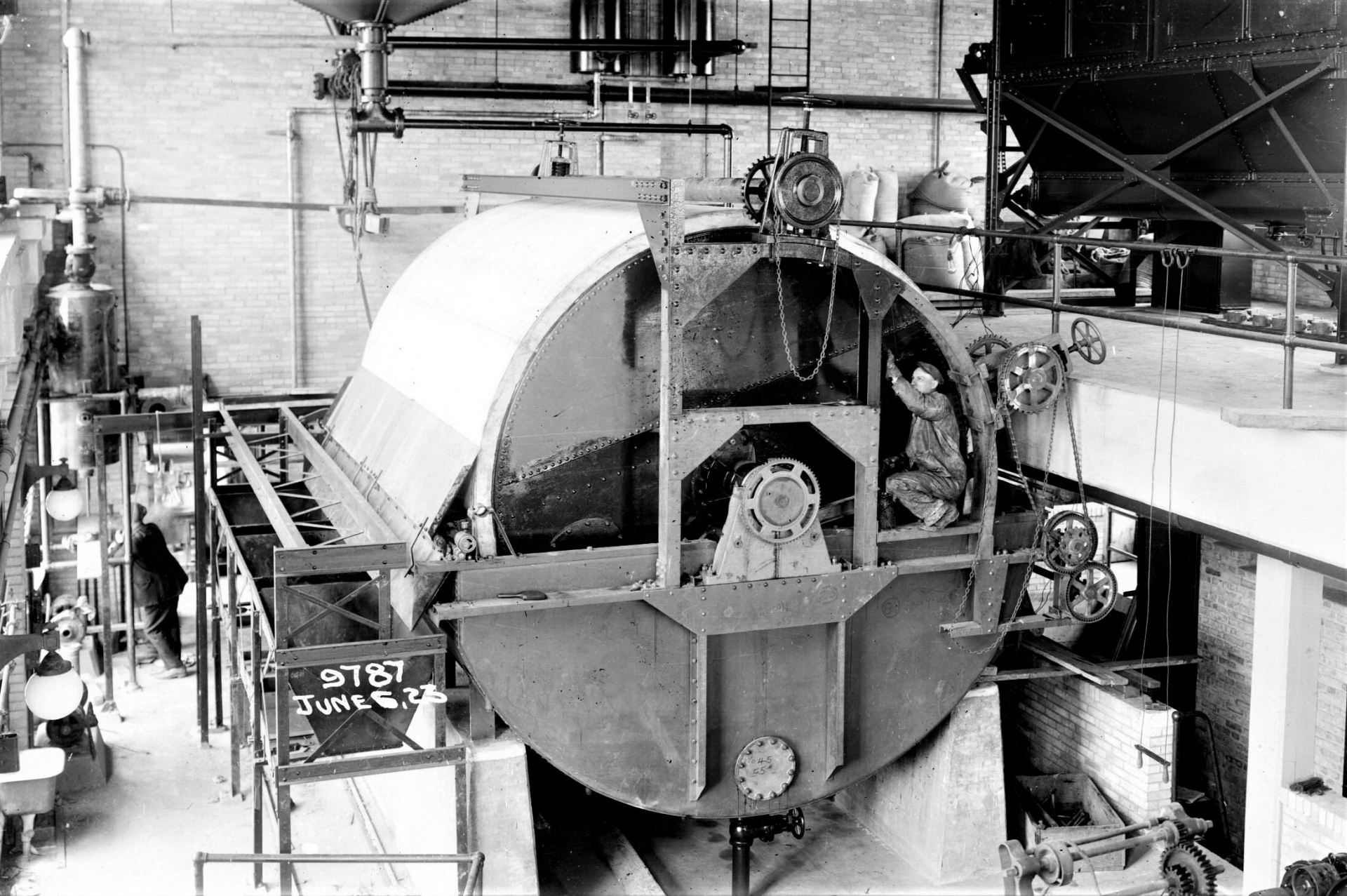
Calumet Plant, raw sewage screens and grit tanks,
April 1923



Calumet Plant, Imhoff tanks in operation, October 1922



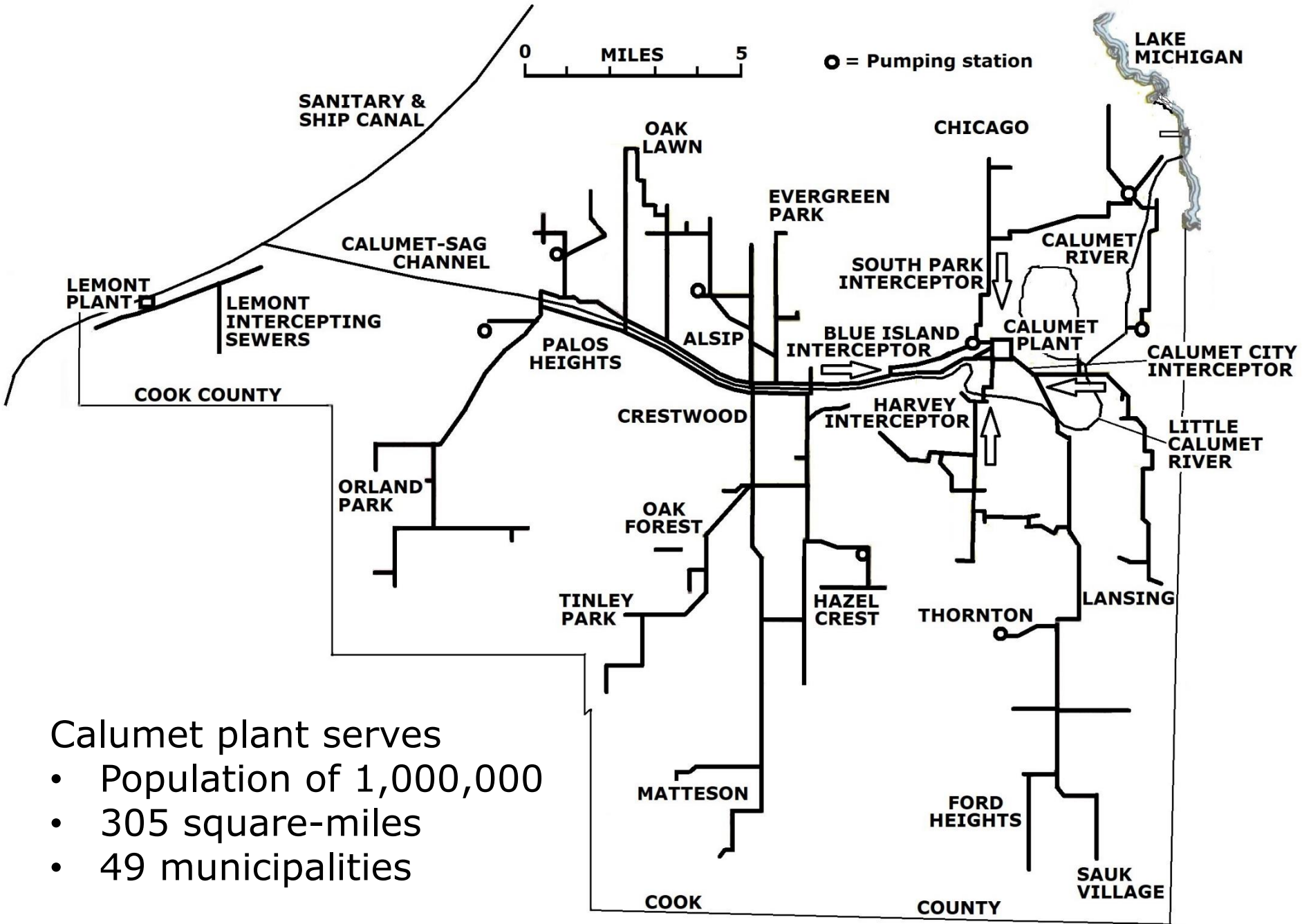
Calumet Plant, experimental activated sludge process unit, April 1923



Calumet Plant, rotary drum vacuum filter for sludge dewatering experiments, June 1923



Calumet Plant, produce grown with dried sludge on
experimental farm, September 1923



Calumet plant serves

- Population of 1,000,000
- 305 square-miles
- 49 municipalities

CALUMET

First and Forever

Draining the South Area of Chicago and Territorial Expansion

Richard Lanyon

Calumet is a place name, recognizing and honoring the indigenous people who lived here before European settlement.

The Calumet plant was the first large District plant, and it should always be named Calumet.

Thank you