



TENTH ANNUAL

SUSTAINABILITY

SUMMIT

Friday, October 21, 2022

2022

**Metropolitan Water Reclamation
District of Greater Chicago**

TENTH ANNUAL
SUSTAINABILITY  **SUMMIT**
2022

FORD CALUMET ENVIRONMENTAL CENTER
11555 South Stony Island Avenue, Chicago, IL

Friday, October 21, 2022

AGENDA

Welcoming Remarks and Commissioner Introductions

Kari K. Steele, *President, MWRD Board of Commissioners*
Emcee

Overview of Biosolids and Compost Use as a Sustainable Practice and Current Partnerships

Dr. Theresa Johnston, *MWRD Senior Environmental Soil Scientist*

MWRD and Farm Bureau's Collaboration to Advance Nutrient Loss Goals

Bona J. Heinsohn, *CAE, Cook County Farm Bureau, Director of Governmental Affairs & Public Relations*

MWRD Partnership Programs, Role of Green Infrastructure, Flood Prone Property Buyouts, and How to Apply for Grants from Public Sector Resources

Rich Fisher, *MWRD Principal Civil Engineer*

History of the Calumet Water Reclamation Plant and Cal-Sag Channel

Richard Lanyon, *Retired MWRD Executive Director and author*

Introduction of Community Partnership Council

Saul Arumbula

Stephen Bell

Sara Brown

Michael Fraider

Brandi Kishner

Donald McGrew

Damon Nelson

David Peterson

Tom Shepherd

Brendon Troutman

Kate Whalen

Award Winners

Sustainable Landscaping

Village of Elmwood Park

Village of Brookfield

Biosolids Beneficial Reuse

The Village of Alsip

Chicago Region Trees Initiative

Speaker Biographies

Kari K. Steele

MWRD Board President Kari K. Steele was elected November 6, 2012, to her first term as a Commissioner at the Metropolitan Water Reclamation District of Greater Chicago and re-elected in 2018 for a second term. In January 2019 she was elected President of the Board of Commissioners. President Steele currently serves as the Chairman for the Engineering Committee and the State Legislation and Rules Committee. She also is the Vice Chairman of the Procurement Committee.



Richard Fisher

Richard Fisher is a Principal Civil Engineer within the Stormwater Division of the Metropolitan Water Reclamation District's Engineering Department. He oversees many of the MWRD's Stormwater Master Planning efforts and Pilot Studies and administers the MWRD's Flood Prone Property Acquisition Program and Stormwater Partnership Program. Rich has over 25 years of professional experience planning, designing, and managing public/private capital improvement projects. He received his bachelor's degree from the University of Illinois at Chicago and Master of Engineering from the Illinois Institute of Technology.



Speaker Biographies, *continued*

Bona J. Heinsohn

Bona J. Heinsohn, CAE, Director Governmental Affairs and Public Relations, Cook County Farm Bureau. Ms. Heinsohn serves as the organization's local government lobbyist. In addition, she directs the organization's policy generating process, and directs the organization's public outreach activities and events.



Bona received a M.A. in Political Studies from the University of Illinois and a B.S. in Agriculture from Illinois State University. In 2018, she was named a Certified Association Executive (CAE), the highest credential available for an association professional.

Dr. Theresa Johnston

Dr. Theresa Johnston is a Senior Environmental Soil Scientist at the MWRD. She received her Ph.D. in Environmental Toxicology from the University of Illinois at Urbana-Champaign.

Dr. Johnston earned a B.S. and an M.S. in Natural Resources and Environmental Sciences with focuses on resource ecology, soil science and urban ecology at the University of Illinois.

She spent time at McGill University and the U.S. EPA Atlantic Ecology Division for post-doctoral research before teaching at Loyola University Chicago for three years. Theresa now works in biosolids research and outreach. Her research focus at the MWRD is application of biosolids and restoration of native soils using biosolids.



Speaker Biographies, *continued*

Richard Lanyon

Dick Lanyon retired from his position as Executive Director of the Metropolitan Water Reclamation District of Greater Chicago (MWRD) at the close of 2010, a position that he held for 4½ years. His career at the MWRD spanned nearly 48 years.



Starting in 2012, Dick published four books. All four completely describe the engineered drainage system in metropolitan Chicago and history of the engineered MWRD infrastructure.

Dick has received numerous awards including the American Society of Civil Engineer's National Government Civil Engineer of the Year Award in 1999; Distinguished Alumnus of the Department of Civil and Environmental Engineering at the University of Illinois at Urbana-Champaign (UIUC) in 2003; Edward J. Cleary Award from from the American Academy of Environmental Engineers and Scientists in 2011; and Distinguished Service Award from the National Association of Clean Water Agencies (NACWA) in 2011. He is also a past President of the Illinois Section of the American Society of Civil Engineers and holds Bachelor and Master of Civil Engineering degrees from the UIUC. In 2013, Dick was inducted into the NACWA Hall of Fame.

Mr. Lanyon has been involved in a variety of technical activities for multiple organizations, and he has served in several leadership roles on environmental protection and water resource management matters for federal, state and local agencies and organizations.

SAFE MEDICATION DISPOSAL = SAFER WATERWAYS



The Metropolitan Water Reclamation District of Greater Chicago (MWRD) encourages you to “**THINK INSIDE THE BOX**” when disposing unused medications. Prescription and over-the-counter medications can harm waterways.

Protect the waterways. Use MWRD’s secure, permanent medication collection boxes to dispose of your unwanted and expired medications:

Main Office Building

100 E. Erie St., Chicago
Monday through Friday
9 a.m. to 6 p.m.

Calumet WRP

400 E. 130th St., Chicago
7 days/week
9 a.m. to 6 p.m.

O’Brien WRP

3500 Howard St., Skokie
7 days/week
9 a.m. to 6 p.m.

Stickney WRP

6001 W. Pershing Rd., Cicero
7 days/week
9 a.m. to 6 p.m.

Tip: Keep medications in their original packaging and containers when possible.

To learn more, visit mwrld.org/medication-disposal or call (312) 751-6633.



**Metropolitan Water
Reclamation District
of Greater Chicago**



mwrld.org



WHERE DOES IT GO?

ADVENTURES WITH THE WATER SCIENCE EXPLORERS

Have you ever wondered what happens after you flush the toilet or pour something down the drain?

“Where Does IT Go?” has the answers and a whole lot more!



Download a free copy today at mwr.org and watch the award-winning animation on our YouTube channel.

#MWRDwheredoesitgo



WRITTEN AND ILLUSTRATED BY THE
**Metropolitan Water Reclamation
District of Greater Chicago**

BOARD OF COMMISSIONERS

Kari K. Steele
President
Barbara J. McGowan
Vice President
Marcelino Garcia
Chairman of Finance

Cameron Davis
Kimberly DuBuclet
Josina Morita
Chakena D. Perry
Eira L. Corral Sepúlveda
Mariyana T. Spyropoulos

Brian A. Perkovich
Executive Director



THE
*Green
Neighbor*
GUIDE



**Metropolitan Water
Reclamation District
of Greater Chicago**

The Green Neighbor Guide **IS AVAILABLE FOR DOWNLOAD AT** MWRD.ORG.

Ford Calumet Environmental Center

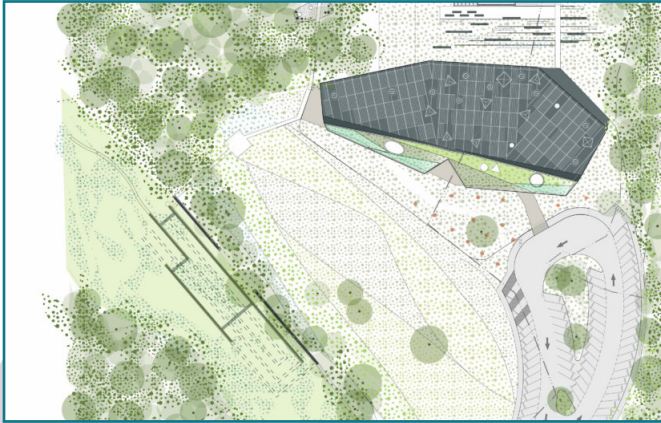
The Ford Calumet Environmental Center (FCEC) at Big Marsh Park in Chicago's South Deering community serves as an anchor for the expanding Southeast Side park system and a space to celebrate the rich environmental, cultural, and industrial history of this area. The hub connects the public to the region's natural areas and park amenities, including the world-class bike park located at Big Marsh Park.

The \$7.8 million region-focused environmental stewardship and education center at Big Marsh Park features 9,300 square feet of indoor space that consists of an office, lobby, and community room, a concession space with bike maintenance, as well as public restrooms.

Big Marsh Park is connected to the Roseland/Pullman targeted INVEST South/West community and received \$1.5 million in Tax Increment Financing (TIF) to support the next phase of park development. To date, over \$300 million in public sector investment has been deployed across 10 INVEST South/West neighborhoods. TIF for park development will include a multi-use, accessible trail around the perimeter of the park with boardwalks over wetland/marsh, pavilions and overlooks, camping platforms, entry plaza, and nature signage.

An educational exhibit depicting the history and ecology of the Southeast Side natural areas as well as a large multi-purpose classroom will provide school and community groups a valuable space to explore and learn. The facility will host on-site educational, eco-recreational, and stewardship-related programming, and utilize the surrounding natural area to facilitate guided nature walks, classroom instruction, science-based curriculum, and other environmental programming.

Innovation is at the core of this Leadership in Energy and Environmental Design (LEED) Silver development that supports Chicago's first-ever controlled wastewater wetland, a septic system that is autonomous of the City's sewer and utilizes natural plant material to filter and clean water. The building designed by the local architectural firm Valerio Dewalt Train in 2016 features a mass timber structure and a bird-safe exterior design.



The need for a visitor center focused on nature and environmental matters in the Calumet Region was first conceived in response to a study by the Chicago Department of the Environment in 1997.

In 2014, the Chicago Park District conducted a feasibility study for the FCEC with support from the Chicago Community Trust and engaged partners and community stakeholders in planning for the development. The study reaffirmed the need for a center on the Southeast Side and recommended the FCEC be located at Big Marsh Park, a 280-acre property in the Calumet area. Prior to the completion of the study, the Center was identified as one of the 14 priority initiatives for the Millennium Reserve Steering Committee, which imagined the open space reserve system within the Calumet Region as a connector of green spaces throughout northeast Illinois.

The Chicago Environmental Fund (CEF) dedicated \$3.7 million towards the construction of the Center and an additional \$500,000 to support environmental programming. Ford Motor Company originally provided these funds to CEF.

Eco-recreational programming is available for all ages and will include guided hikes, camping, birding, biking, and hands-on volunteer opportunities.

Featuring some of Chicago Park District's largest natural areas, the Calumet Region is also home to some of its most impressive displays of biodiversity. Big Marsh Park, which opened in 2016, is now a safe, open, and inviting eco-recreational destination that enhances the overall natural habitat of the park property including sensitivity to flora, fauna, and wetlands.



Metropolitan Water Reclamation District of Greater Chicago

Board of Commissioners

Kari K. Steele
President

Barbara J. McGowan
Vice President

Marcelino Garcia
Chairman of Finance

Cameron Davis

Kimberly Du Buclet

Josina Morita

Chakena D. Perry

Eira L. Corral Sepúlveda

Mariyana T. Spyropoulos

Brian A. Perkovich
Executive Director

mwr.org 312.751.6633

