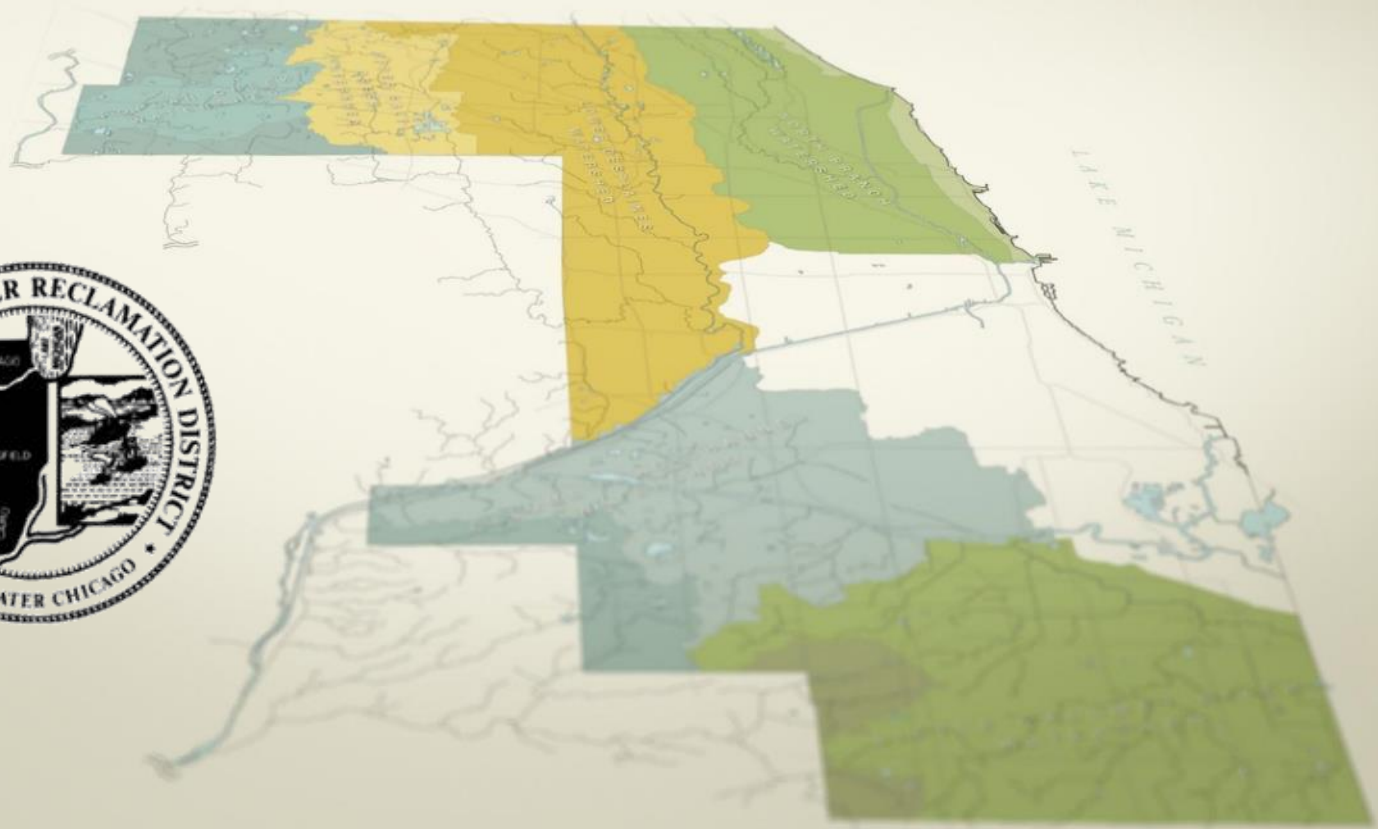


# ***MWRD Infiltration and Inflow Control Program (IICP) and Rebuild Illinois Grant Information Session***



**May 14, 2020**  
**Ann Gray**



# Infiltration and Inflow Control Program (IICP)

- Ongoing maintenance, operation, and rehabilitation effort to identify and remove groundwater infiltration and stormwater inflow sources from the sanitary sewer system
- MWRD IICP requirements are included in Article 8 of the Watershed Management Ordinance (WMO)
- MWRD IICP guidance is included in the Technical Guidance Manual (TGM)
- WMO and TGM can be found at [mwrdd.org/ii](http://mwrdd.org/ii)
- If you are not sure if you are in compliance or have any other questions, please contact Ann Gray at [graya@mwrdd.org](mailto:graya@mwrdd.org)



# Short Term Requirements

- **Completion of Short Term Requirements were due July 10, 2019**  
(Five year period from 2015-2019)
  - Condition Assessment of high risk sanitary sewers
    - Inspection activities such as televising, smoke testing, and dye testing
  - Identify high priority deficiencies
  - Rehabilitation work to address high priority deficiencies
  - Develop Long Term Operations and Maintenance Plan (LTOMP)
    - Includes development of Private Sector Program (PSP) to identify and correct infiltration and inflow sources in the private sewer system



# Short Term Requirements

- Annual Summary Report is due March 1st of each year detailing progress of the program requirements.
- **Five year period of Short Term Requirements is past due**
  - If you have not done so, please submit the following as soon as possible:
    - Annual Summary Report for 2019 and any previous years that have not been submitted
    - LTOMP and PSP document



# Long Term Operation and Maintenance Requirements

- Once Short Term Requirements are complete and approved by MWRD, satellite entities transition to Long Term Program
- Includes on-going inspection, maintenance and rehabilitation of the public sewer system
  - Minimum of 2% each year or 10% in five years should be inspected
  - Annual summary reports to track progress required to be submitted each year
- PSP for the identification and correction of infiltration and inflow sources in private sewer systems



# Rebuild Illinois Grant Opportunity

- Illinois Department of Commerce and Economic Opportunity currently has three Rebuild Illinois Grant opportunities
- MWRD IICP activities are eligible for Rebuild Illinois Competitive Public Infrastructure (RIPI) Grant
  - Sewer investigation activities are eligible for funding
  - Sewer rehabilitation including sewer lining are eligible for funding
  - Deadline to submit grant paperwork is June 30, 2020
    - All applicants must register with the State of Illinois via the Grantee Portal and be pre-qualified prior to submitting application
  - Two-year grant period
  - Guidebook for the Public Infrastructure Grant is available on the website
  - Website for additional information is as follows:  
[https://www2.illinois.gov/dceo/CommunityServices/CommunityInfrastructure/Pages/RebuildIllinois\\_Programs.aspx](https://www2.illinois.gov/dceo/CommunityServices/CommunityInfrastructure/Pages/RebuildIllinois_Programs.aspx)



# Rebuild Illinois Grant Opportunity

- Counties, Cities, Villages and Townships may apply
  - Sanitary Districts are not eligible to apply for grants
  - "On behalf of" applications are acceptable
  - Municipalities can apply on behalf of Sanitary Districts
- GATA requirements
  - Applicants must register with the state and be pre-qualified before submitting application.
  - Must be registered in SAM, the Federal System for Award Management, with a valid CAGE Code (identifier for funding)
- Grant Administrator
  - Manage and provide oversight of grant, if awarded
  - List is provided on the website
  - Administrator does not have to be one from the list. A resume can be sent in to get approval to use a Grant Administrator not on their list.



# Rebuild Illinois Grant Opportunity

- Grant funds may not be used for any activity in an area delineated as a FEMA special flood hazard area. FEMA Floodplain Map should be included in application.
- A public hearing process is necessary if local government is committing funds to the project
- Leverage or match is not required to apply for grant funds; however, applicants are strongly encouraged to provide leverage/match to obtain maximum points on the application





# Rebuild Illinois Grant Opportunity

- **Applicants are ranked based on the following:**
  - **Project Impact** - Relationship to Governor's Five-Year Economic Plan which involves improving the state's economy. The applicant will need to explain how the project relates to the principles, goals, challenges or key industries.
    - Connections to other capital investments in the region
    - Amplification of the impact by proximity or connection to other assets
    - Minority Inclusion Plan - Strength of applicant's plan to include minority- and women-owned businesses in the project
    - Business Infrastructure - how does this project improve a community's ability to retain or increase jobs?
    - Impact per capita - Total grant amount divided by the number of residents in the unit of local government.



# Rebuild Illinois Grant Opportunity

- **Applicants are ranked based on the following:**
  - **Creation of Jobs** - What jobs will be utilized during construction phase?
  - **Community Need** – Why is this project necessary; and what is the benefit to the community?
  - **Community Support** – In what ways will the community support this project?
  - **Project Readiness** – Each application must demonstrate that the proposed project is appropriate and achievable and that all actions required have been completed to ensure timely implementation of the project.



# State of Illinois Contacts

Wendy Bell

217.558.4200

[Wendy.Bell@illinois.gov](mailto:Wendy.Bell@illinois.gov)

Joe McKeown

312.814.1457

[Joseph.McKeown@illinois.gov](mailto:Joseph.McKeown@illinois.gov)

Manuel (Manny) Lopez

773.502.7506

[Manuel.Lopez@Illinois.gov](mailto:Manuel.Lopez@Illinois.gov)

Lisa Thomas-Swaine

217.558.4221

[Lisa.Thomas-Swaine2@illinois.gov](mailto:Lisa.Thomas-Swaine2@illinois.gov)

Agnes Masnik

312.882.6840

[Agnes.Masnik@illinois.gov](mailto:Agnes.Masnik@illinois.gov)



# MWRD Contact Information

## **IICP:**

Ann Gray, P.E.  
Senior Civil Engineer  
Local Sewer Systems Section  
MWRDGC  
[graya@mwrdd.org](mailto:graya@mwrdd.org)

## **Grant Application Questions:**

Anne Wright  
Public Affairs Specialist  
Stormwater Section  
MWRDGC  
[wrighta@mwrdd.org](mailto:wrighta@mwrdd.org)