



**Metropolitan Water
Reclamation District
of Greater Chicago**

Grants and MWRD Partnership Programs



Agenda

MWRD Partnership Programs

- Stormwater
- Green Infrastructure
- Flood-Prone Property Acquisition

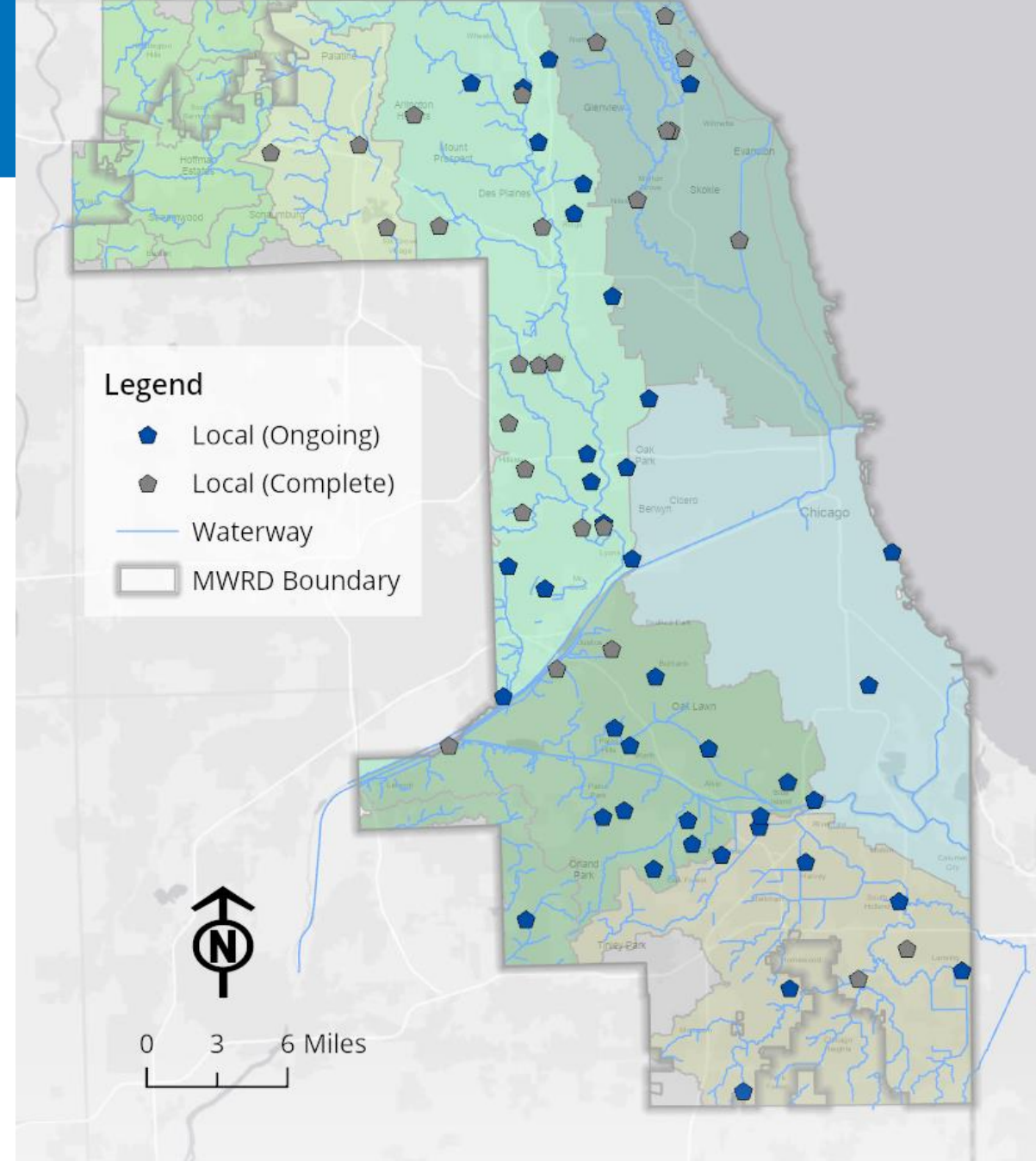
How can these programs help with other grants?

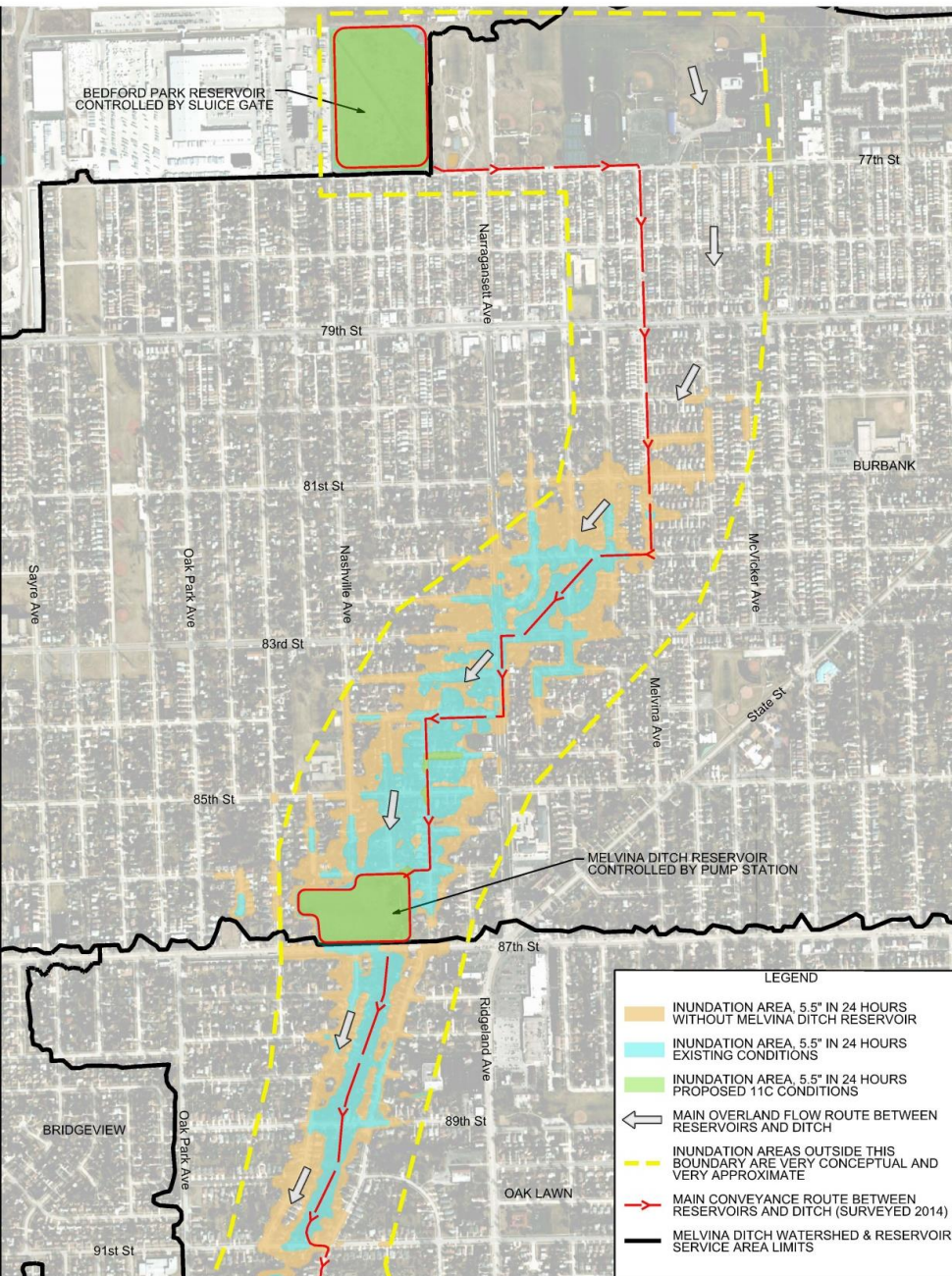




Local Stormwater Partnership Opportunities

- Partnership opportunity with MWRD to address structural flooding.
- MWRD serves as regional authority on stormwater management.
- The goal is to alternate conceptual and shovel-ready projects in future calls for projects
- Selected partners execute an Intergovernmental Agreement (IGA) with MWRD
- MWRD calls for projects and after partner agencies submit applications which can be accessed on MWRD's website, MWRD selects projects.





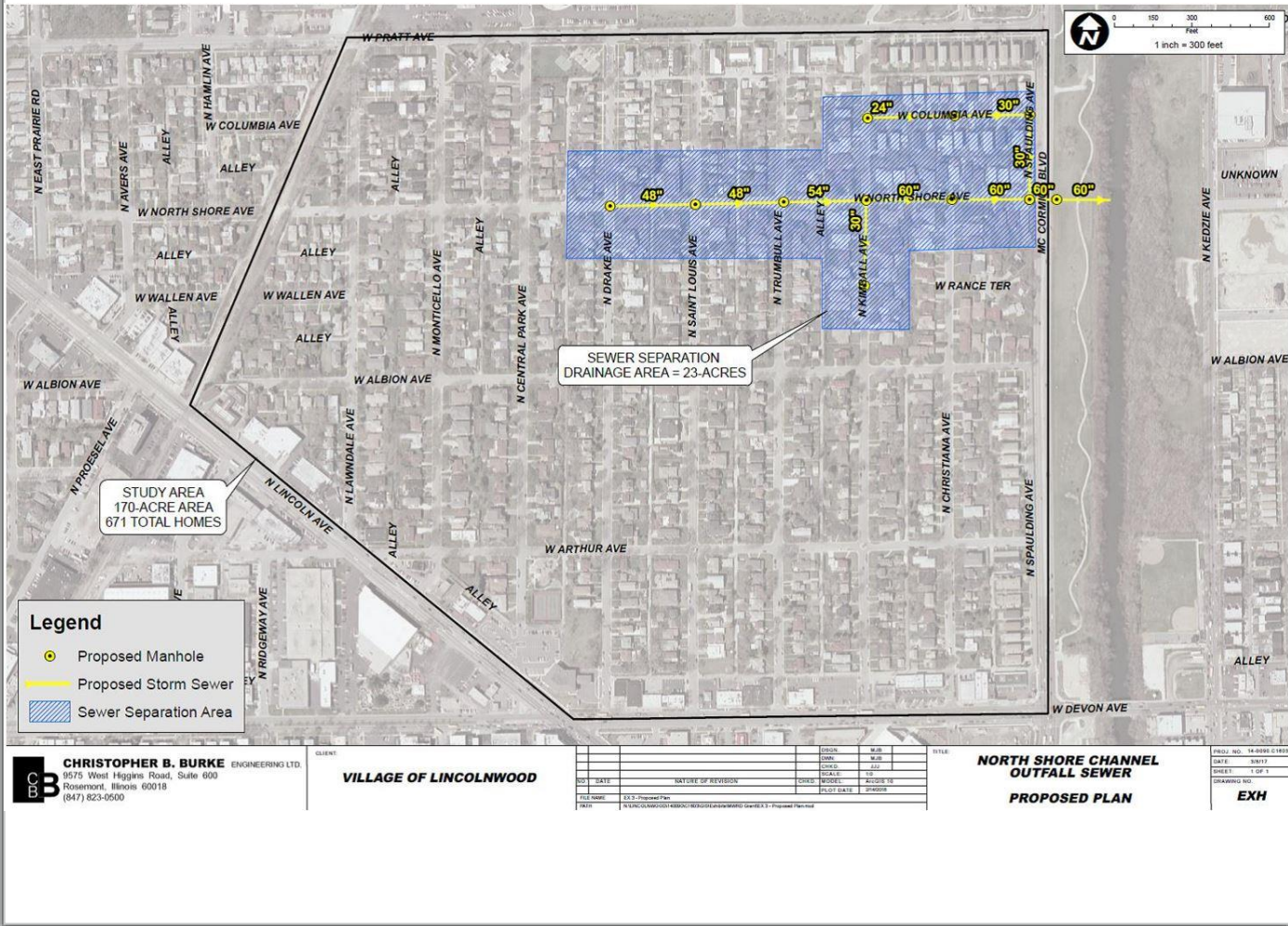
EXH-6_NEW_25yr24hr_NoMDR vs Ex vs Pr11C_ResEI.dgn 4/21/2015 3:07:38 PM

What are Conceptual Projects?

- Conceptual projects are stormwater projects for areas impacted by flooding but the Applicant is in need of resources, both in terms of cost-share funding and engineering expertise, to investigate and develop potential solutions.
- The MWRD will partner with municipalities to identify solutions and potential funding sources for project implementation.
- MWRD initiated Stormwater Master Planning Program to address urban flooding through data-driven analysis identifying priority needs and locations based on flood risks. MWRD will partner with municipalities in areas identified for Stormwater Master Plans.

What are Shovel Ready Projects?

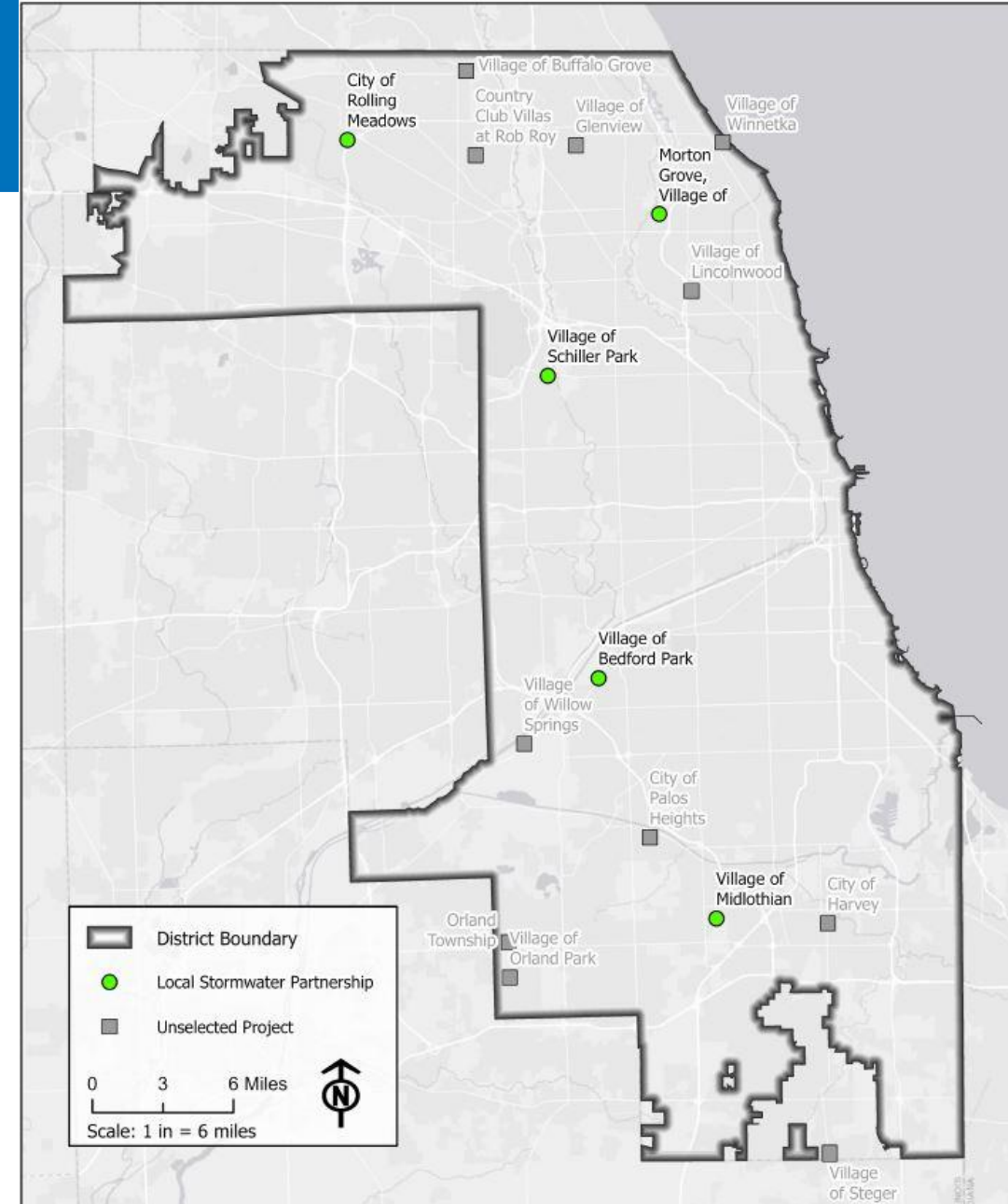
- Shovel Ready projects have a near finalized design prepared by the partner agency.
- MWRD will partner with the community to fund the project.
- Partner agency will manage the design and construction of the project.
- MWRD performs master planning





2021 Local Stormwater Projects

- 16 Conceptual project applications received
- 5 Conceptual projects accepted
- Approximately 236 structures projected to benefit



2021 Stormwater Partnership Program Conceptual Projects

