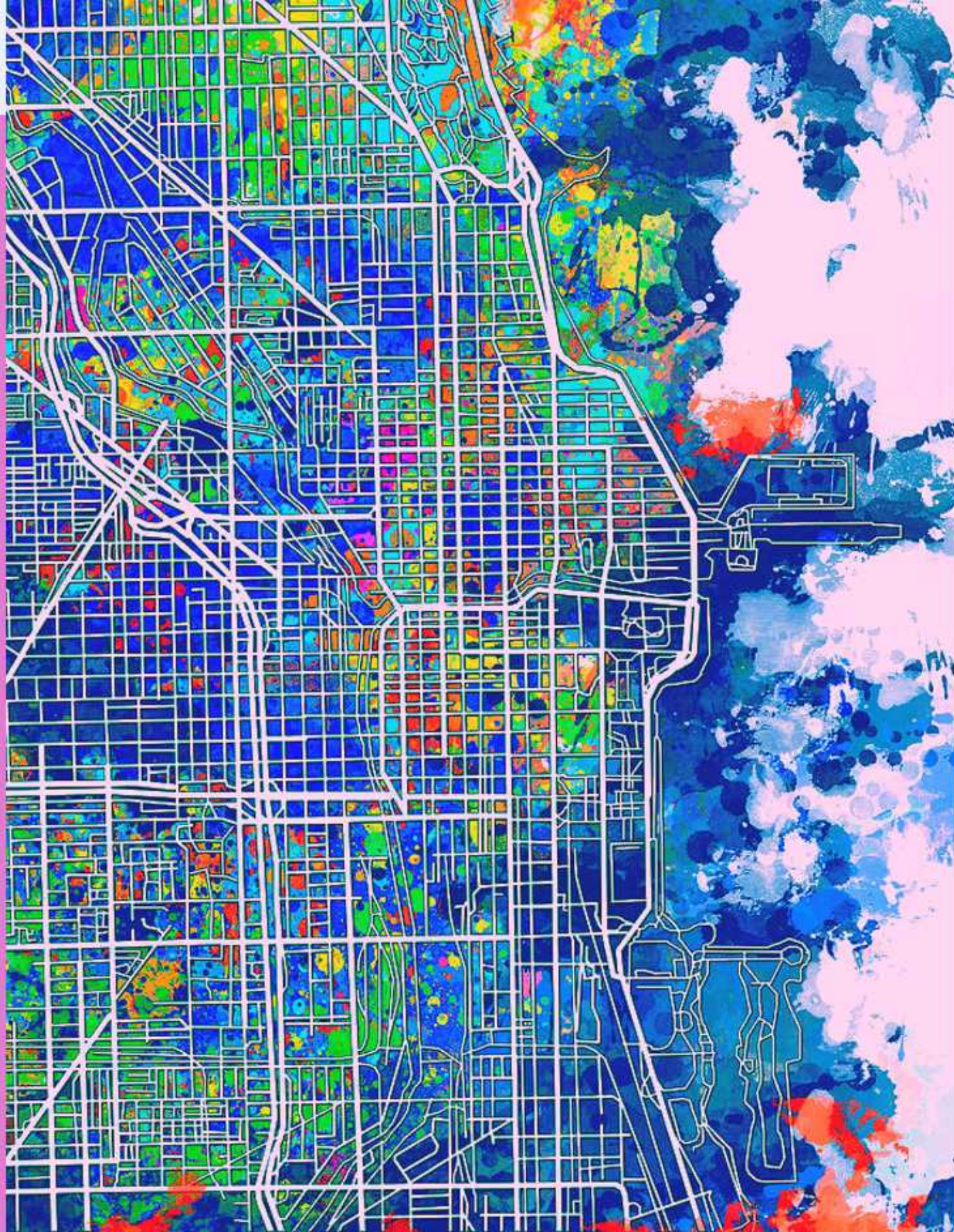




CENTERING COMMUNITIES IN LAND USE PLANNING

SEEDING ENVIRONMENTAL JUSTICE ON PUBLIC LAND.

Ma'raj Sheikh
Systems & Strategy
Chicago Food Policy Action Council



Outline

TODAY'S DISCUSSION

1. Community Resilience
2. Environmental Justice Pathways
3. Land: The Solution Beneath Our Feet
4. Bright Spots That Center Our Communities
 - a. Englewood Nature Trail
 - b. Space to Grow
 - c. Green Era
5. Shifting Mindsets

Community Resilience

What is Community Resilience?

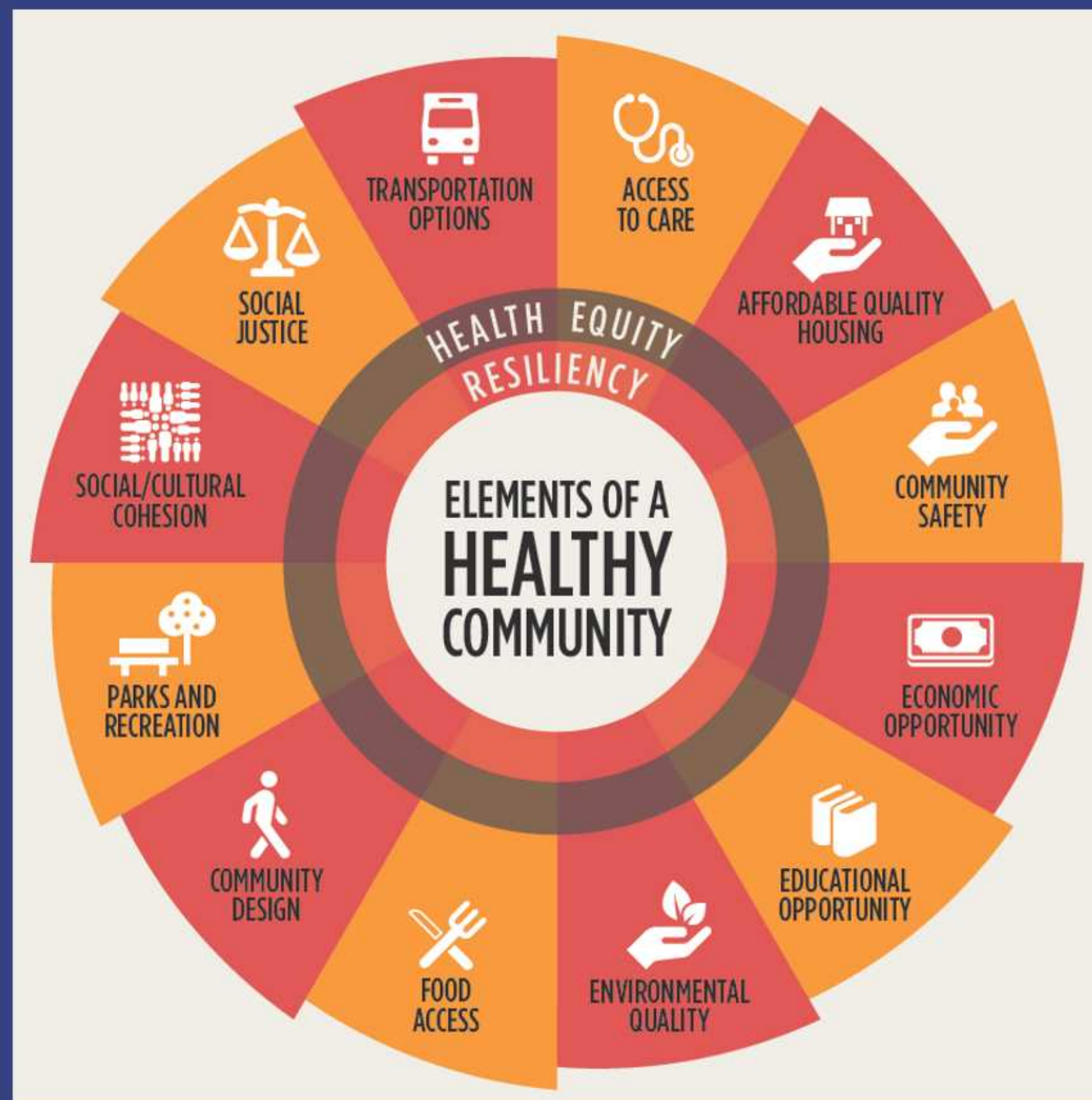
Community resilience is the ability to prepare for hazards, adapt to changing conditions, and withstand and recover rapidly from disruptions.

Why is it important?

We live in a world with increasing, unpredictable, and unprecedented disruptions.

Who is responsible for creating resilience?

This is an "all hands on deck" moment. We all need to respond. Some have greater power and thus greater responsibility to respond.



The diagram features a central light blue circle with a green border containing the text 'ENVIRONMENTAL JUSTICE'. To the right of the circle are three dark blue arrow-shaped boxes pointing right, each containing a component name. To the right of each arrow is a light blue rectangular box with a green border containing a descriptive sentence. The components are: 1. Representation: Impacted communities are represented in the decision-making process. 2. Process: Planning processes and decision-making are fair, transparent, accessible, and provide opportunities for impacted communities to participate. 3. Distribution: Environmental benefits and impacts are distributed equitably and/or mitigated so that no one community bears a disproportionate burden.

ENVIRONMENTAL JUSTICE

Representation

Impacted communities are represented in the decision-making process

Process

Planning processes and decision-making are fair, transparent, accessible, and provide opportunities for impacted communities to participate

Distribution

Environmental benefits and impacts are distributed equitably and/or mitigated so that no one community bears a disproportionate burden

WHAT IS EJ? -> FAIR TREATMENT, MEANINGFUL INVOLVEMENT!

Land: The Solution Beneath Our Feet



ADDRESSING MULTIPLE CHALLENGES NECESSITATES CONSIDERING MULTIPLE BENEFITS!!!



Bright Spots That Center Our Communities:

Space to Grow

Space to Grow is a cross-sectoral program that transforms Chicago schoolyards into beautiful and multifunctional spaces - engaging community members in developing the schoolyard design.

MULTIPLE BENEFITS

- Engages Communities
- Addresses Stormwater Management
- Improves Neighborhood Flood Mitigation
- Boosts Physical Activity and Wellness
- Supports Learning



Englewood Line Trail

The Englewood Nature Trail will be a 1.7 mile park that transforms a vacated rail corridor into a naturalized space for residents to enjoy and use to connect with nature. The trail act as a safe access corridor connecting local farms and businesses.

MULTIPLE BENEFITS

- Engages Communities
- Strengthens Local Food Access
- Expands Employment in the Neighborhood
- Includes Recreation
- Improves Transportation Options

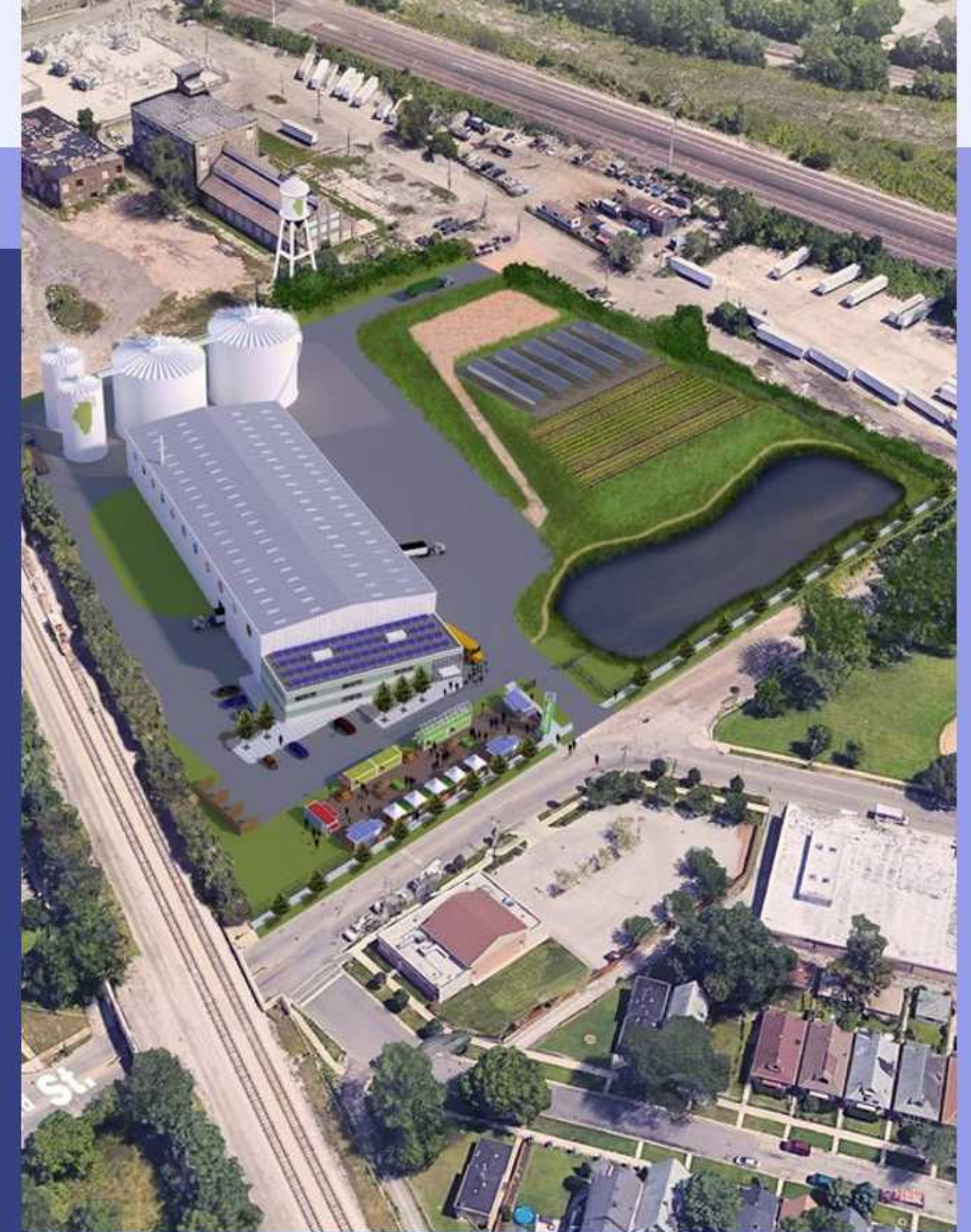


Green Era Chicago

Green Era is a 9-acre brownfield site transformed into an agriculture campus and anaerobic digester that processes food waste into renewable energy and fertile compost. Green Era will bring jobs, fresh food and renewable energy to Chicago's South Side.

MULTIPLE BENEFITS

- Engages Communities
- Creates Renewable Energy
- Provides Waste Management
- Enhances Local Food Production
- Creates Jobs, Training and Education Programs



Shifting Mindsets

STRATEGIES FOR DECISION-MAKERS



ADDRESS EMERGING CHALLENGES.

Be Responsive,
Adaptive,
Collaborative,
Question
Existing Norms
That Prevent
Response.



NAME IT TO TAME IT.

Be explicit in
naming issues
such as racial
inequity, food
insecurity,
wealth gaps
gentrification,
etc,



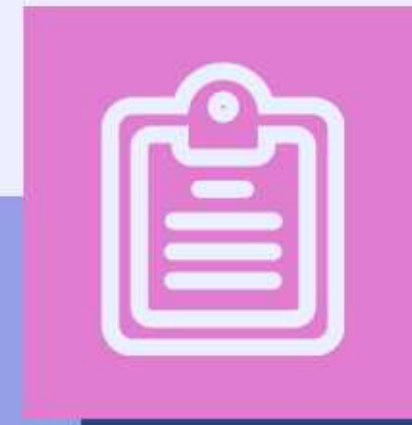
INCLUDE COMMUNITY INPUT AT EVERY STAGE

Defining the
Issues,
Planning and
Design,
Implementation,
Evaluation



SEEK TO MAXIMIZE COMMUNITY BENEFITS.

Environmental
Economic
Social
Health...



EMBODY BEING TRANSPARENT, ACCESSIBLE, ACCOUNTABLE

.
Policies,
Procedures,
Processes.
Distribution of
Benefits and
Burdens



AMPLIFY ECONOMIC EQUITY.

Contracts,
Services,
Goods, etc...



“

Cities have the capability of providing something for everybody, only because, and only when, they are created by everybody.

Jane Jacobs

Author: *The Death and Life of Great American Cities*

”



**Land is the basis of
freedom, justice, and
equality.**

Malcolm X

Civil Rights Movement Leader

