



**Metropolitan Water  
Reclamation District  
of Greater Chicago**

# **Watershed Management Ordinance and Infiltration & Inflow Control Program**

---

Q4 WPC Meetings (October & December 2024)



# New MWRD Website

- Access the **Watershed Management Ordinance and Infiltration/Inflow** section under “Doing Business” or visit [mwrdd.org/wmo](http://mwrdd.org/wmo)

The screenshot shows the homepage of the Metropolitan Water Reclamation District of Greater Chicago website. The header is dark blue with the MWRD logo on the left and navigation links for "Public Notices", "Board of Commissioners", "News", and "Careers" on the right. Below the header, the text "Metropolitan Water Reclamation District of Greater Chicago" is displayed. A secondary navigation bar contains "What We Do", "Community Action", "Education", "Doing Business", and "Events". The "Doing Business" link is circled in red. The main content area features a large image of a city skyline with a river and a bridge, overlaid with the text "Metropolitan Water Reclamation District of Greater Chicago" and "Recovering Resources, Transforming Water". A blue button labeled "Strategic Plan" is located in the bottom left corner.



# New MWRD Website

- New menu with quick access to the Watershed Management Ordinance, Technical Guidance Manual, Permit Application Documents, etc.

## Watershed Management Ordinance and Infiltration/Inflow

[Home](#) / [Doing Business](#) / Watershed Management Ordinance and Infiltration/Inflow

### Watershed Management Ordinance (WMO)

The Watershed Management Ordinance (WMO) applies to all development within the boundaries of Cook County, Illinois, and qualified sewer construction within the MWRD's corporate boundaries or service agreement areas. Components which are regulated under the WMO include qualified sewer construction, drainage and detention, volume control, floodplain management, isolated wetland protection, riparian environment protection, and soil erosion and sediment control. The WMO went into effect on May 1, 2014.

The WMO was last amended on May 2, 2024 to eliminate the requirement to submit a Jurisdictional Determination when development occurs in or near a wetland. A summary of the amendment is [here](#). Current versions of the WMO (redline and clean) can be viewed [here](#).

[The WMO Stormwater Management Report](#) provides the cumulative progress of the implementation of the WMO, including the number of permits issued, the number of acres developed/redeveloped, and the total volume control storage, detention storage and compensatory storage approved under WMO permits.

#### • Watershed Management Ordinance and Infiltration/Inflow

[Watershed Management Ordinance and Technical Guidance Manual](#)

[Permit Application Documents](#)

[Permit Inquiries](#)

[Permit Determinations](#)

[Revisions to Issued Permits](#)

[Infiltration/Inflow Control Program \(IICP\)](#)

[Geographic Information System Assistance](#)

[Pre-Application Meetings](#)

[Petitions for Variance](#)

[WMO Permit Application Submittal System \(WPASS\)](#)



# New MWRD Website

- New links available to submit a permit application to WPASS and make electronic payments.

## Watershed Management Ordinance Permit Application Submittal System (WPASS)

To submit a new permit application through WPASS, click below:

[Submit permit application](#) 



Resubmittals addressing review comments for permits under review are also submitted through WPASS using the unique link provided during the review process.

Detailed instructions are provided below:

[WPASS instructions](#)

For any questions or assistance with submitting the permit application please email us at [wpass@mwrdd.org](mailto:wpass@mwrdd.org) or call [312-751-3255](tel:312-751-3255).

## Electronic Payment

To make an electronic payment for a new permit application, resubmittal, or revision, click below:

[Make a payment](#)





# Approved WMO Amendment

## Approved by the Board of Commissioners May 2, 2024

- Updates to Article 3 & 6:
  - Alternatives are specified for applicants with identified wetlands that minimize the requirements for a Corps Jurisdictional Determination

<b>Army Corps Document Requirements for WMO Permit Application Submittals</b>		
<b>Wetland Determination</b>	<b>Wetland impact proposed</b>	<b>No wetland impact proposed</b>
<b><i>Corps Jurisdictional Wetland</i></b>	Submit a Section 404 permit or document from the Corps indicating an impact is allowed; otherwise, wetland shall be regulated as an isolated wetland	Submit a document from the Corps that the wetland is a jurisdictional wetland; otherwise, wetland shall be regulated as an isolated wetland
<b><i>Isolated Wetland</i></b>	Submit a document from the Corps indicating a Section 404 permit is not required or the wetland is not a jurisdictional wetland; and the wetland shall be regulated as an isolated wetland	Document from the Corps not required, and the wetland shall be regulated as an isolated wetland

- Amended Ordinance and redline document are available at [mwrdd.org/wmo](http://mwrdd.org/wmo)

### **[Watershed Management Ordinance \(WMO\)](#)**

[MWRD Watershed Management Ordinance](#)  (As amended on May 2, 2024) (6.57 MB)

[Redline MWRD Watershed Management Ordinance](#)  (As amended on May 2, 2024) (7.02 MB)



# Next WMO Amendment

- The following WMO articles and appendices will be updated next; including, substantive updates, minor clarifications, and revised section references and layout:
  - Article 1 – Authority and Purpose
  - Article 2 – Applicability and General Provisions
  - Article 3 – Permit Requirements and Submittals
  - Article 4 – Erosion and Sediment Control
  - Article 5 – Stormwater Management
  - Article 6 – Flood Protection Areas
  - Article 7 – Requirements for Sewer Construction
  - Article 8 – Infiltration and Inflow Control Program
  - Article 12 – Enforcement and Penalties
  - Article 14 – Administration
  - Appendix A – Definitions
  - Appendix D – District Controlled Waterways (New Appendix)
  - Appendix F – Permit Fees



# Next WMO Amendment

## Summary of Substantive Draft Updates:

### Article 2 & 5 Draft Updates:

- Pilot Study:
  - Deadline extended from 2025 to 2026 for study on offsite retention-based practices and detention facilities within the Lower Des Plaines or Little Calumet River watershed planning areas
- Volume Control Requirements:
  - Proposed increase to the property holding threshold (from 0.50 acre to 1 acre) and impervious area threshold (from 0.10 acre to 0.50 acre) requiring Volume Control
- Permit Applicability:
  - New or reconstructed outfalls to District controlled waterways or to Lake Michigan will require a permit (new Appendix to be provided)
  - Modification of greater than or equal to 0.50 acre to the detention service area of a District permitted detention facility or major stormwater system will require a permit
  - Modification to the control structure, facility configuration, or storage volume of a District permitted volume control facility, detention facility, or compensatory storage facility will require a permit



# Next WMO Amendment

## Article 6 Draft Updates:

- Floodplain Requirements:
  - New provision noting compensatory storage is not required for fill within the flood protection area of Lake Michigan
- Riparian Environment:
  - Introduce a minimum threshold for impacts requiring mitigation under certain circumstances (e.g., projects for stormwater outfalls or public access recreational activities)





# Next WMO Amendment

## Appendix A Draft Updates:

- Updated/New Definitions:
  - Flood Control Project
  - Gross Allowable Release Rate
  - Offsite Detention Facility
  - Permittee
  - Violation Report (new)
  - Watershed Specific Release Rate (new)

## Appendix F Draft Updates:

- The addition of a \$750 flat fee when a violation is discovered by the District to replace the current fee structure of \$250 per inspection for violations

## Next Steps:

- Final review by Law Department – Complete
- Public Presentation and Public Comment Period – Complete
- Board Approval – November
  - Drafted updates are subject to change until Board approval



# TGM Updates

The following Technical Guidance Manual articles will be updated next:

- Article 3 – Permit Requirements and Submittals
- Article 6 – Flood Protection Areas
- Article 7 – Sewer Construction



# IICP Short Term Requirements

- Annual Summary Report is due March 1st of each year detailing progress of the program requirements.
- **Five year period of Short Term Requirements is past due**
  - If you have not done so, please submit the following as soon as possible:
    - Past Annual Summary Reports that have not been submitted
    - LTOMP and PSP document
- If you are not sure whether you are in compliance with the District's IICP or have any other questions, please contact Ann Gray at [GrayA@mwr.org](mailto:GrayA@mwr.org)



## IICP Long Term Operation and Maintenance Requirements

- Once Short Term Requirements are complete and approved by MWRD, satellite entities transition to Long Term Program



# WMO Permits - Construction

- Construction under issued WMO permits is monitored by the MWRD's Local Sewer Systems Section Field Office Unit
  - Field Office must be notified ahead of the start of construction work under a WMO permit.
  - Notification can be made by calling (708) 588-4055 or by sending email to [WMOJobStart@mwrdd.org](mailto:WMOJobStart@mwrdd.org)
  - Please be reminded that development for which a WMO permit is required cannot begin until the MWRD has issued a permit



# WMO Permits - Construction

- Villages are responsible to ensure new staff are aware of the WMO, and of the responsibilities of Villages as Permittee
  - Villages play a critical role in preventing construction without a permit or in advance of receiving a WMO permit
    - Villages should not issue grading permits before WMO permits are issued
    - Villages should not issue occupancy permits until after the RFI is signed
  - As system engineers and Permittee, the Village is expected to inspect work under construction and to sign RFIs

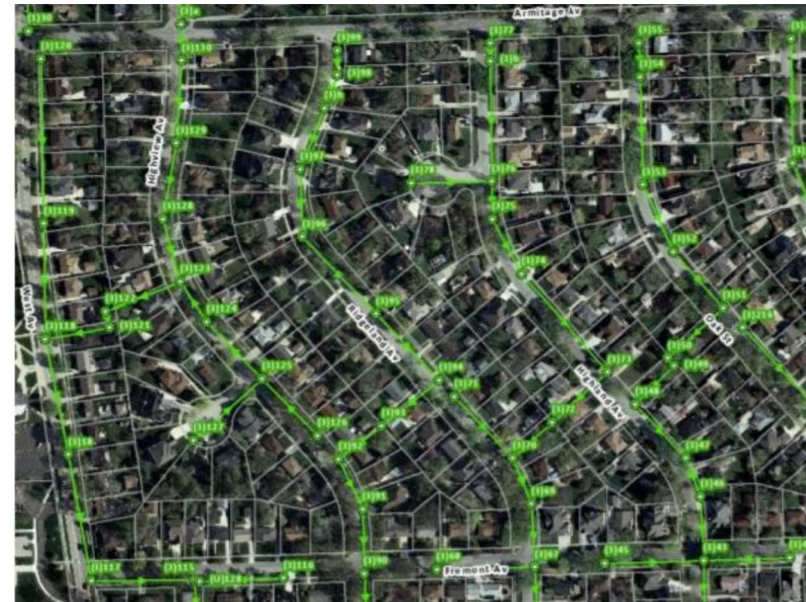


# Sewer System Atlas GIS Files

Please share your GIS sewer system files

- ✓ Sanitary
- ✓ Storm
- ✓ Combined

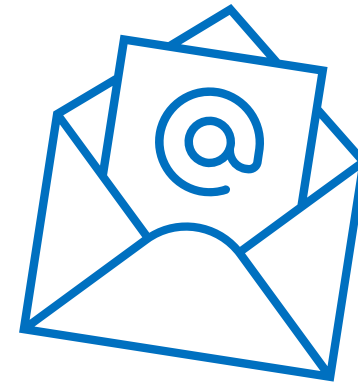
Email [mwrdei@mwrdei.org](mailto:mwrdei@mwrdei.org)





# Contact Updates

- Permit determination requests
  - Contact Constance Mihalache at [MihalacheC@mwrdd.org](mailto:MihalacheC@mwrdd.org)
- Pre-application meetings
  - Contact Jeremiah Campion at [campionj@mwrdd.org](mailto:campionj@mwrdd.org)
- Previously issued SPO/WMO permits
  - Email [MWRDPI@mwrdd.org](mailto:MWRDPI@mwrdd.org); or
  - Submit Permit Inquiry web form at [mwrdd.org/wmo](http://mwrdd.org/wmo)
- WPASS questions and GPS units
  - Contact Ann Gray at [GrayA@mwrdd.org](mailto:GrayA@mwrdd.org)
- Email list for WMO updates
  - WMO Amendment, new forms posted, I/I updates, etc.
  - Send email to [WMOupdates@mwrdd.org](mailto:WMOupdates@mwrdd.org) to join the list
- Please download and use the most recent WMO forms
  - All forms found at [mwrdd.org/wmo](http://mwrdd.org/wmo) under *Permit Application Documents*
  - May need to “clear browser cache” to see updates







# Questions

## **Contact Information:**

LaVenta Barlow

Associate Civil Engineer

Local Sewer Systems Section

MWRDGC

111 E. Erie St., Chicago, IL 60611

[barlowl@mwrdd.org](mailto:barlowl@mwrdd.org)