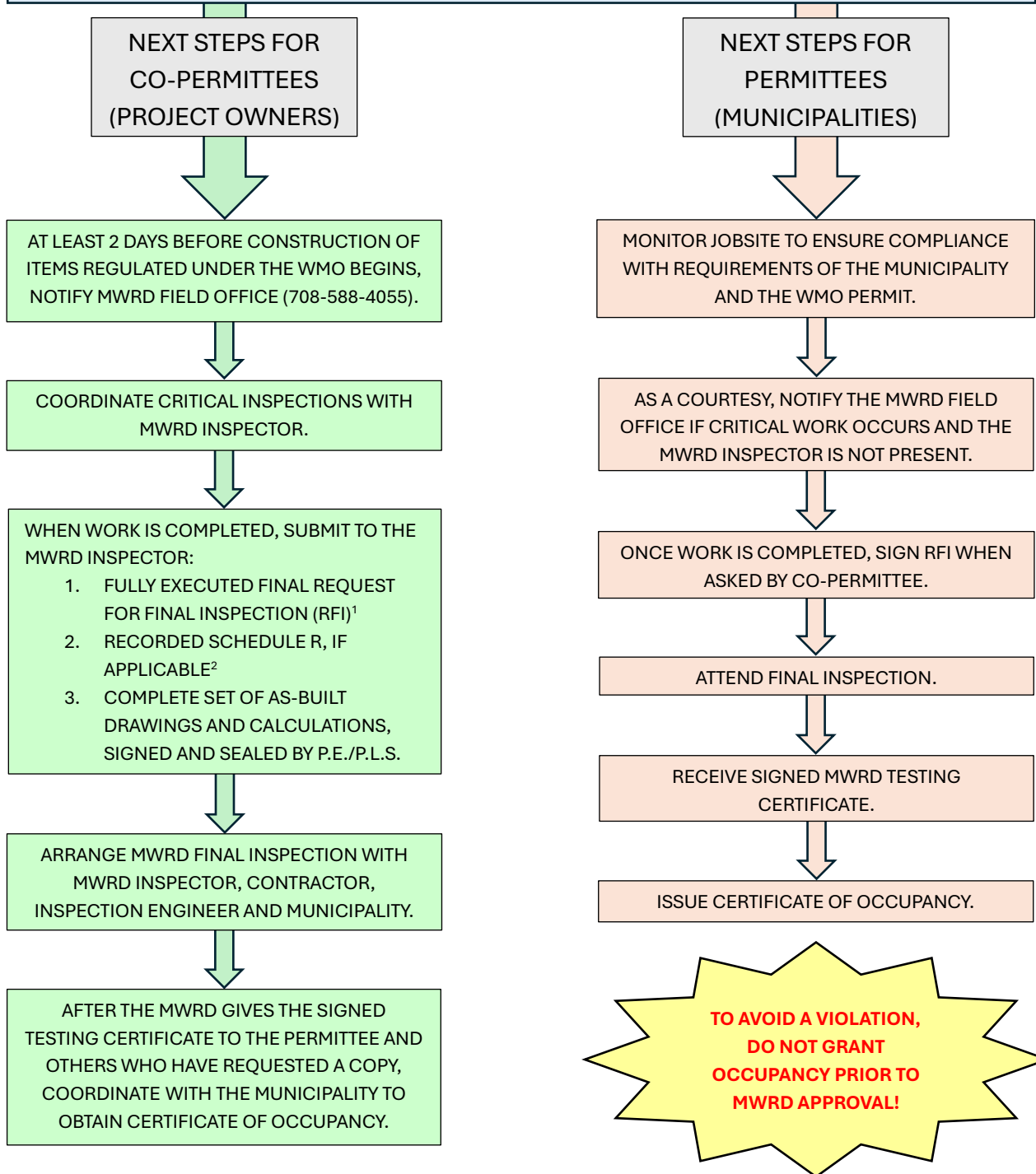


**WHAT TO DO AFTER A WMO PERMIT IS ISSUED:
A GUIDE FOR PERMITTEES AND CO-PERMITTEES**

CONGRATULATIONS ON RECEIVING YOUR WMO PERMIT!



NOTES:

- CERTAIN PROJECTS REQUIRE MORE THAN ONE RFI (E.G., WHEN A SANITARY DISTRICT, UTILITY COMPANY OR ADJACENT MUNICIPALITY OWNS A SEWER TO WHICH THE PROJECT SITE IS TRIBUTARY).
- SCHEDULE R IS ONLY REQUIRED FOR NON-PUBLIC PROJECTS, WHEN INDICATED BY A SPECIAL CONDITION IN THE ISSUED WMO PERMIT.